



# Happenings 1185

<https://mysarl.org.za/hf-happenings/>

## The International Women’s Day YL POTA Party Celebrates Women in Amateur Radio!

Join us on Sunday 8 March for a special International Women’s Day YL POTA Party! This event is open to all female amateur radio operators and enthusiasts, regardless of POTA experience. Activate a park during the 24-hour event window. Submit your POTA activations to the POTA database and share your experiences with other participants. Connect with other YLs from around the world. Share stories, tips, and support. Learn more about POTA and how to get involved.

We encourage you to wear pink and/or decorate your station to show your support for International Women’s Day! Spread the word and invite your friends to join the party! Together, we can make this a memorable event for all YLs in amateur radio!

Remember Sunday 8 March 2026 from any POTA park (or hunt POTA from home!) using any amateur radio frequency within your license class. We look forward to hearing you on the air! Hashtag: [#YL\\_POTA\\_Party](#). The POTA website is at <https://parksontheair.com/>. Shannon Gibney, KC1OHT, [kc1oht@gmail.com](mailto:kc1oht@gmail.com) is organising the event.

## ICASA Spectrum Licence Fees for 2026/2027

ICASA notified the SARL on Monday 9 February 2026 that they will be starting the renewal process in this week and hopefully by Tuesday 10 February 2026. So, watch out for that e-mail from ICASA. Remember, you can pay with a credit/debit card on the ICASA portal and get your licence with a return e-mail. The Licence year runs from 1 April 2026 to 30 March 2027.

### February

- 11 - International Day of Women and Girls in Science
- 12A - World Radio Day
- 14 - Valentine’s Day
- 14 and 15 - the CQ WW WPX RTTY contest and the Ride for Sight cycle race
- 16 - the May RAE registration open
- 17 - Partial Solar Eclipse
- 18 - start of Ramadan (tentative date) and the SARL Wednesday 80 m Club Contest
- 21 and 22 - the ARRL Inter DX CW Contest
- 25 - the Santon Power Hour Tech Talk
- 27 - International Milk Tart Day
- 28 - the North American RTTY QSO Party

### March

- 1 - the North American RTTY QSO Party and the SARL HAMNET 40 m Simulated Emergency Contest
- 7 - the SARL YL QSO Party and the West Rand Boot Sale
- 7 and 8 - the ARRL Inter DX SSB Contest
- 8 - International Women’s Day and the YL POTA event
- 12A - Africa Scout Day
- 14 and 15 - the RSGB Commonwealth Contest and the SARL National Field Day

The 2026/2027 licence fees will increase by 3.2% and the new fee will be as follows - 1-Year Licence - from R 196.00 to R 202.00; 2-Year Licence - from R 374.00 to R 386.00; 3-Year Licence - from R 537.00 to R 553.00; 4-Year Licence - from R 684.00 to R 705.00 and a 5-Year Licence - from R 817.00 to R 842.00.

### DX from Africa

(These count towards your All Africa Award)

Morocco, CN. Jeff, VA3QSL will be active holiday style as CN2CN from Agadir, Morocco between 8 and 14 February. He will operate SSB, CW and digital modes with QSL via LoTW, or via home call (direct and bureau).

Mali, TZ. Ulmar, DK1CE will be active again as TZ1CE from Bamako, Mali between 10 February and 1 March. He will operate mainly SSB and digital, with a focus on 160, 80 and 6 metres QSOs will be uploaded to Club Log daily and to LoTW after the operation. QSL via home call.

Benin TY. Red, DL1BUG, will once again be active as TY5FR from Cotonou, Benin between 6 March and 5 April with activity on 80 to 10 m using CW and SSB, with an IC7300 (100 W) into a CG3000 auto-tuner and 22 m wire antenna. He plans to be active in the ARRL DX SSB Contest on 7 and 8 March as a Single-Op entry. QSL via DL1BUG, direct, by the Bureau, LoTW or ClubLog's OQRS.

The Gambia, C5. Arnaud, F4AGG and Luc, F5RAV will be active as C5B, C5C and C5D from The Gambia, and from Bijolo Island (IOTA AF-060), between 25 April and 8 May. The activation of each callsign will be as follows:

C5B - From Bijolo Island (IOTA AF-060); RS44 satellites, probable 2 passes for EU and SA)

C5C - The Gambia (SSB and CW)

C5D - The Gambia (RTTY, PSK and FT8)

Contacts will be confirmed via LoTW, or directly via F5RAV for C5B and C5C. C5D, only confirmations via LoTW. Note: For satellite operations from Bijolo Island, please stay tuned as there are no set dates. More operators may be added.

### African Islands

Reunion Island, FR and Mayotte, FH. Ivan, UR9IDX, is now active as FR/UR9IDX from Reunion Island until 15 or 16 February. Activity has been on 20 and 10 m using CW and SSB. Ivan plans to go to Mayotte next and be active as FH/UR9IDX for at least 20 days. Activity should be about the same as Reunion Island operation. QSL via UR9IDX direct only.

Reunion, FR. Jun, JL8AQH (ex-VP9/JL8AQH, ZL7/JL8AQH, ZS1/JL8AQH and XV9XX), is now active as FR/G3JUN since 9 February from Reunion Island. The length of his stay is unknown currently. Activity has been on 30, 17 and 10 metres using CW. QSL via JL8AQH, direct or LoTW. NO Bureau.

### Contest Calendar

This week's contests as compiled by Bruce Horn, WA7BNM. The period covered is from 2 to 9 February 2026.

K1USN Slow Speed Test  
00:00 - 01:00 UTC 9 February  
Geographic Focus: Worldwide  
Participation: Worldwide  
Mode: CW

Bands: 160, 80, 40, 20, 15, 10 m  
Classes: Single Op - QRP, low or high  
Max power: HP: >100 watts; LP: 100 watts;  
QRP: 5 watts

Exchange: Maximum 20 wpm – name and state, province or country  
 Work stations: Once per band  
 QSO Points: 1 point per QSO  
 Multipliers: Each state, province or country once per band; W/VE do not count as country mults  
 Score Calculation: Total score = total QSO points x total mults  
 Submit logs by: 23:59 UTC 11 February 2026  
 Post log summary at: [www.3830scores.com](http://www.3830scores.com)  
 Mail logs to: (none)  
 Find rules at: [www.k1usn.com/sst.html](http://www.k1usn.com/sst.html)



4 States QRP Group Second Sunday Sprint  
 01:00 - 03:00 UTC 9 February  
 Geographic Focus: North America  
 Participation: Worldwide  
 Mode: CW, SSB  
 Bands: 160, 80, 40, 20, 15, 10 m  
 Classes: Single Op  
 Max power: CW: 5 watts, SSB: 10 watts  
 Exchange: Member: RS(T), state, province or country and member no; Non-member: RS(T), state, province or country and power  
 Work stations: Once per band  
 QSO Points: 1 point per QSO with non-member; 2 points per QSO with member  
 Multipliers: (none)  
 Score Calculation: Total score = total QSO points  
 Submit logs by: 11 February 2026  
 E-mail logs to: (none)  
 Post log summary at: <http://qrptest.com/4sgrp>  
 Mail logs to: (none)  
 Find rules at: [www.4sgrp.com/SSS/sss\\_rules\\_revised\\_02\\_2026.pdf](http://www.4sgrp.com/SSS/sss_rules_revised_02_2026.pdf)

ARRL School Club Roundup

13:00 UTC 9 February to 23:59 UTC 12A February  
 Geographic Focus: Worldwide  
 Participation: Worldwide  
 Mode: CW, Phone, RTTY/Digital  
 Bands: All, except 60, 30, 17, 12 m  
 Classes: Single Op (I); Non-School Club (C); School Club/Group (S)  
 Max operating hours: 24 hours total. 6 hours out of any 24-hour period with off times of at least 10 minutes  
 Exchange: RS(T), Class (I/C/S) and state, province or country  
 Work stations: Once per mode  
 QSO Points: 1 point per phone QSO; 2 points per CW/RTTY/digital QSO  
 Multipliers: States and VE provinces and DXCC countries and (2 x class C QSOs) and (5 x class S QSOs)  
 Score Calculation: Total score = total QSO points x total mults  
 Submit logs by: 23:59 UTC 28 February 2026  
 Post log summary at: <https://contests.arrl.org/arrlscrscoresubmission.php>  
 Mail logs to: School Club Roundup, c/o LIMARC, PO Box 392, Levittown, NY 11756, USA  
 Find rules at: [www.arrl.org/school-club-roundup](http://www.arrl.org/school-club-roundup)

ICWC Medium Speed Test  
 13:00 - 14:00 UTC and 19:00 - 20:00 UTC 9 February and 03:00 - 04:00 UTC 10 February  
 Geographic Focus: Worldwide  
 Participation: Worldwide  
 Mode: CW  
 Bands: 160, 80, 40, 20, 15, 10 m  
 Classes: Single Op - QRP, low or high  
 Max power: HP: >100 watts; LP: 100 watts; QRP: 5 watts  
 Exchange: Name and QSO no  
 Work stations: Once per band  
 QSO Points: 1 point per QSO  
 Multipliers: Each call once  
 Score Calculation: Total score = total QSO points x total mults  
 Submit logs by: 04:00 UTC 12 February 2026  
 Post log summary at: [www.3830scores.com](http://www.3830scores.com)  
 Mail logs to: (none)

Find rules at:  
<https://internationalcouncil.org/mst-contest/>

OK1WC Memorial (MWC)  
16:30 - 17:29 UTC 9 February  
Geographic Focus: Worldwide  
Participation: Worldwide  
Mode: CW  
Bands: 80, 40 m  
Classes: Single Op All Band - QRP or low; Single Op Single Band - QRP or low  
Max power: LP: 100 watts; QRP: 5 watts  
Exchange: RST and serial no  
Work stations: Once per band  
QSO Points: 1 point per QSO  
Multipliers: Each last character of worked station call suffix once per band  
Score Calculation: Total score = total QSO points x total mults  
Submit logs by: 06:00 UTC 13 February 2026  
E-mail logs to: (none)  
Upload log at: <https://memorial-ok1wc.cz/index.php?page=logs>  
Mail logs to: (none)  
Find rules at: <https://memorial-ok1wc.cz/index.php?page=rules2>

Worldwide Sideband Activity Contest  
01:00 - 01:59 UTC 10 February  
Geographic Focus: Worldwide  
Participation: Worldwide  
Mode: SSB  
Bands: 160, 80, 40, 20, 15, 10, 6m  
Classes: Single Op - QRP, low or high  
Overlay: Youth (26 years old or younger); Youth YL (female 26 years old or younger); YL (female older than 26 years)  
Max power: HP: 1 500 watts; LP: 100 watts; QRP: 5 watts  
Exchange: RS and age group (OM, YL, Youth YL or Youth)  
Work stations: Once per band  
QSO Points: 1 point per QSO with OM; 5 points per QSO with YL; 10 points per QSO with Youth; 15 points per QSO with Youth YL  
Multipliers: Each DXCC once per band  
Score Calculation: Total score = total QSO points x total mults  
Submit logs by: 01:59 UTC 11 February 2026  
E-mail logs to: (none)

Upload log at: <https://logs.wwsac.com/>  
Mail logs to: (none)  
Find rules at: <https://wwsac.com/rules.html>

DARC FT4 Contest  
19:00 - 20:29 UTC 10 February  
Geographic Focus: Worldwide  
Participation: Worldwide  
Mode: FT4  
Bands: 80, 40 m  
Classes: Single Op - QRP or low  
Max power: LP: 100 watts; QRP: 5 watts  
Exchange: Signal report and 4-character grid square  
Work stations: Once per band  
QSO Points: 1 point per QSO  
Multipliers: Each prefix once per band  
Score Calculation: Total score = total QSO points x total mults  
Submit logs by: 20:29 UTC 17 February 2026  
E-mail logs to: (none)  
Upload log at: <https://dxhf2.darc.de/~ft4log/upload.cgi?form=referat&lang=de>  
Mail logs to: (none)  
Find rules at: [www.darc.de/der-club/referate/conteste/ft4-contest/ft4-rules/](http://www.darc.de/der-club/referate/conteste/ft4-contest/ft4-rules/)



NAQCC CW Sprint  
01:30 - 03:30 UTC 11 February  
Geographic Focus: United States/Canada  
Participation: Worldwide  
Mode: CW  
Bands: 80, 40, 20 m  
Classes: (none)  
Max power: 5 watts  
Exchange: RST, state, province or country and NAQCC no or power  
Work stations: Once per band  
QSO Points: 1 point per QSO with non-member; 2 points per QSO with member

Multipliers: Each state, province, or country once; Key Type Mult: 2 x if straight key, 1.5 x if bug, 1 x if other

Score Calculation: Total score = total QSO points x total mults x key type mult

Submit logs by: 23:59 UTC 14 February 2026

E-mail logs to: (none)

Upload log at:

<http://naqcc.info/autologger.php>

Mail logs to: (none)

Find rules at:

[http://naqcc.info/sprint\\_rules.html](http://naqcc.info/sprint_rules.html)

QRP Fox Hunt

02:00 - 03:30 UTC 11 February

Geographic Focus: United States

Participation: Worldwide

Mode: CW

Bands: 40 m Only

Classes: Single Op - fox or hound

Max power: 5 watts

Exchange: RST, state, province or country, name and power output

QSO Points: 1 point per QSO

Multipliers: (none)

Score Calculation: Total score = total QSO points

Submit logs by: 03:30 UTC 12 February 2026

E-mail logs to: (see rules)

Mail logs to: (none)

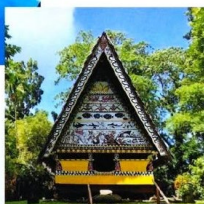
Find rules at:

[www.qrpfoxhunt.org/winter\\_rules.htm](http://www.qrpfoxhunt.org/winter_rules.htm)



*Greetings  
From  
Western  
Pacific*

**T88AC**  
Republic of Palau



Phone Weekly Test

02:30 - 03:00 UTC 11 February

Geographic Focus: North America

Participation: Worldwide

Mode: SSB

Bands: 160, 80, 40, 20, 15 m

Classes: Single Op

Max power: 100 watts

Exchange: NA: Name and state, province or country; non-NA: Name

Work stations: Once per band

QSO Points: NA station: 1 point per QSO; non-NA station: 1 point per QSO with an NA station

Multipliers: Each US state (including KH6/KL7) once per band; Each VE province/territory once per band; Each North American country (except W/VE) once per band

Score Calculation: Total score = total QSO points x total mults

Submit logs by: 03:00 UTC 13 February 2026

E-mail logs to: (none)

Post log summary at: [www.3830scores.com](http://www.3830scores.com)

Mail logs to: (none)

Find rules at:

[www.perluma.com/Phone\\_Fray\\_Contest\\_Rule\\_s.pdf](http://www.perluma.com/Phone_Fray_Contest_Rule_s.pdf)

A1Club AWT

11:45 - 13:00 UTC 11 February

Geographic Focus: Worldwide

Participation: Worldwide

Mode: CW

Bands: 160, 80, 40, 20, 15, 10 m

Classes: Single Op - QRP, low or high

Max power: HP: >100 watts; LP: 100 watts;

QRP: 5 watts

Exchange: Member: RST and name

Work stations: Once per band

QSO Points: 1 point per QSO

Multipliers: Each call once

Score Calculation: Total score = total QSO points x total mults

Submit logs by: 16 February 2026

Post log summary at: [www.3830scores.com](http://www.3830scores.com)

Mail logs to: (none)

Find rules at: <https://a1club.org/contest/awt/>

CWops Test (CWT)

13:00 - 14:00 UTC and 19:00 - 20:00 UTC 11

February and 03:00 - 04:00 UTC and 07:00 -

08:00 UTC 12 February

Geographic Focus: Worldwide

Participation: Worldwide

Awards: Worldwide

Mode: CW

Bands: 160, 80, 40, 20, 15, 10 m

Classes: Single Op - QRP, low or high

Max power: HP: >100 watts; LP: 100 watts;

QRP: 5 watts

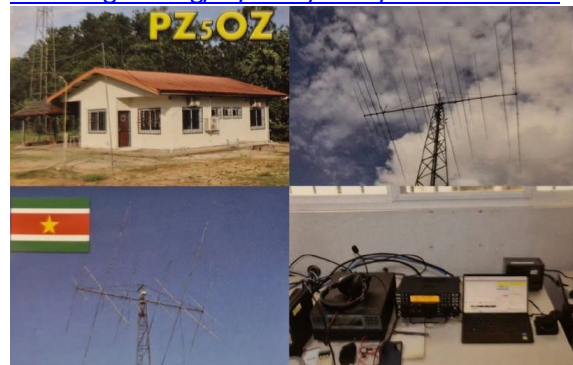
Exchange: Member: Name and member no or CWA; non-Member: Name and state, province or country  
 Work stations: Once per band  
 QSO Points: 1 point per QSO  
 Multipliers: Each call once  
 Score Calculation: Total score = total QSO points x total mults  
 Submit logs by: 08:00 UTC 14 February 2026  
 Post log summary at: [www.3830scores.com](http://www.3830scores.com)  
 Mail logs to: (none)  
 Find rules at: <https://cwops.org/cwops-tests/>

Mini-Test 40  
 17:00 - 17:59 UTC 11 February  
 Geographic Focus: Worldwide  
 Participation: Worldwide  
 Mode: CW  
 Bands: 40 m Only  
 Classes: Single Op - QRP, low or high  
 Max power: HP: >100 watts; LP: 100 watts;  
 QRP: 5 watts  
 Exchange: RST and serial no  
 Work stations: Once per 10-minute period  
 QSO Points: 1 point per QSO  
 Multipliers: Each call once  
 Score Calculation: Total score = total QSO points x total mults  
 Submit logs by: 13 February 2026  
 Upload log at: <https://ua9qcq.com/hf-logs.php>  
 Mail logs to: (none)  
 Find rules at: <http://minitest.narod.ru/>

Mini-Test 80  
 18:00 - 18:59 UTC 11 February  
 Geographic Focus: Worldwide  
 Participation: Worldwide  
 Mode: CW  
 Bands: 80 m Only  
 Classes: Single Op - QRP, low or high  
 Max power: HP: >100 watts; LP: 100 watts;  
 QRP: 5 watts  
 Exchange: RST and serial no  
 Work stations: Once per 10-minute period  
 QSO Points: 1 point per QSO  
 Multipliers: Each call once  
 Score Calculation: Total score = total QSO points x total mults  
 Submit logs by: 13 February 2026  
 Upload log at: <https://ua9qcq.com/hf-logs.php>  
 Mail logs to: (none)

Find rules at: <http://minitest.narod.ru/>

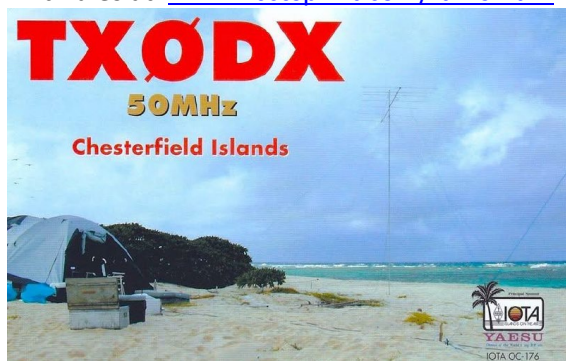
RSGB 80 m Data Club Championship  
 20:00 - 21:30 UTC 11 February  
 Geographic Focus: United Kingdom  
 Participation: Worldwide  
 Awards: United Kingdom  
 Mode: RTTY, PSK  
 Bands: 80 m Only  
 Classes: (none)  
 Exchange: RST and serial no  
 QSO Points: 1 point per QSO  
 Multipliers: (none)  
 Score Calculation: (see rules)  
 Submit logs by: 23:59 UTC 12 February 2026  
 Upload log at: [www.rsgbcc.org/cgi-bin/hfenter.pl](http://www.rsgbcc.org/cgi-bin/hfenter.pl)  
 Mail logs to: (none)  
 Find rules at: [www.rsgbcc.org/hf/rules/2026/r80\\_mcc.shtml](http://www.rsgbcc.org/hf/rules/2026/r80_mcc.shtml)



YLRL YL-OM Contest  
 00:00 UTC 12A February to 23:59 UTC 14 February  
 Geographic Focus: Worldwide  
 Participation: Worldwide  
 Mode: CW/Digital, SSB  
 Bands: All, except WARC  
 Classes: (none)  
 Max operating hours: 24 hours  
 Max power: HP: >100 watts; LP: 100 watts;  
 QRP: 5 watts  
 Exchange: QSO, RS(T) and section, province or country  
 Work stations: Once per band per mode  
 QSO Points: 1 point per QSO  
 Multipliers: Each section, province, country once per mode; Power factor: x3 for QRP, x1.5 for LP  
 Score Calculation: Total score = total QSO points x total mults x power factor  
 Submit logs by: 17 March 2026

E-mail logs to: [vicepresident@y1rl.org](mailto:vicepresident@y1rl.org)  
Upload log at: <https://y1rl.net/contest-submission/>  
Mail logs to: Diane Ortiz, PO Box 657,  
Copiague, NY 11726, USA  
Find rules at: <https://y1rl.org/wp/y1-om-contest/>

NCCC FT4 Sprint  
01:00 - 01:30 UTC 12A February  
Geographic Focus: North America  
Participation: Worldwide  
Mode: FT4  
Bands: (see rules)  
Classes: (none)  
Max power: 100 watts  
Exchange: 4-character grid square  
QSO Points: 1 point per QSO  
Multipliers: Each 4-character grid square once per band  
Score Calculation: Total score = total QSO points x total mults  
Submit logs by: 15 February 2026  
E-mail logs to: (none)  
Upload log at: <https://lotw.arrl.org/>  
Post log summary at: [www.3830scores.com/](http://www.3830scores.com/)  
Mail logs to: (none)  
Find rules at: [www.ncccsprint.com/ft4ns.html](http://www.ncccsprint.com/ft4ns.html)



Weekly RTTY Test  
01:45 - 02:15 UTC 12A February  
Geographic Focus: North America  
Participation: Worldwide  
Mode: RTTY  
Bands: 80, 40, 20, 15, 10 m  
Classes: Single-Op - QRP or low  
Max power: LP: 100 watts; QRP: 5 watts  
Exchange: Name and state, province or country  
Work stations: Once per band  
QSO Points: 1 point per QSO  
Multipliers: Each call sign once

Score Calculation: Total score = total QSO points x total mults  
Submit logs by: 15 February 2026  
E-mail logs to: (none)  
Post log summary at: [www.3830scores.com/](http://www.3830scores.com/)  
Mail logs to: (none)  
Find rules at: <https://radiosport.world/wrt.html>

QRP Fox Hunt  
02:00 - 03:30 UTC 12A February  
Geographic Focus: United States  
Participation: Worldwide  
Mode: CW  
Bands: 80 m Only  
Classes: Single Op - fox or hound  
Max power: 5 watts  
Exchange: RST, state, province or country, name and power output  
QSO Points: 1 point per QSO  
Multipliers: (none)  
Score Calculation: Total score = total QSO points  
Submit logs by: 03:30 UTC 14 February 2026  
E-mail logs to: (see rules)  
Mail logs to: (none)  
Find rules at: [www.qrpfoxhunt.org/winter\\_rules.htm](http://www.qrpfoxhunt.org/winter_rules.htm)

NCCC Sprint  
02:30 - 03:00 UTC 12A February  
Geographic Focus: North America  
Participation: Worldwide  
Mode: CW  
Bands: (see rules)  
Classes: (none)  
Max power: 100 watts  
Exchange: Serial no, name and QTH  
Score Calculation: Total score = total QSO points x total mults  
Submit logs by: 15 February 2026  
E-mail logs to: (none)  
Post log summary at: [www.3830scores.com/](http://www.3830scores.com/)  
Mail logs to: (none)  
Find rules at: <https://ncccsprint.com/rules.html>

K1USN Slow Speed Test  
20:00 - 21:00 UTC 12A February  
Geographic Focus: Worldwide  
Participation: Worldwide

Mode: CW  
 Bands: 160, 80, 40, 20, 15, 10 m  
 Classes: Single Op - QRP, low or high  
 Max power: HP: >100 watts; LP: 100 watts;  
 QRP: 5 watts  
 Exchange: Maximum 20 wpm – name and  
 state, province or country  
 Work stations: Once per band  
 QSO Points: 1 point per QSO  
 Multipliers: Each state, province or country  
 once per band; W/VE do not count as country  
 mults  
 Score Calculation: Total score = total QSO  
 points x total mults  
 Submit logs by: 23:59 UTC 15 February 2026  
 Post log summary at: [www.3830scores.com](http://www.3830scores.com)  
 Mail logs to: (none)  
 Find rules at: [www.k1usn.com/sst.html](http://www.k1usn.com/sst.html)

CQ WW RTTY WPX Contest  
 00:00 UTC 14 February to 23:59 UTC 15  
 February  
 Geographic Focus: Worldwide  
 Participation: Worldwide  
 Awards: Worldwide  
 Mode: RTTY  
 Bands: 80, 40, 20, 15, 10 m  
 Classes: Single Op All Band - QRP, low or high;  
 Single Op Single Band - QRP, low or high; Single  
 Op Overlays – Tribander, Rookie, Classic or  
 Youth; Multi-One - low or high; Multi-Two;  
 Multi-Multi; Multi-Distributed  
 Max operating hours: Single Op: 30 hours, off  
 times of at least 60 minutes; Multi-Op: 48  
 hours  
 Max power: HP: 1500 watts; LP: 100 watts;  
 QRP: 5 watts  
 Exchange: RST and serial no  
 Work stations: Once per band  
 QSO Points: 1 point per QSO with same  
 country on 20/15/10 m; 2 points per QSO with  
 same country on 80/40 m; 2 points per QSO  
 with different countries on same continent on  
 20/15/10 m; 4 points per QSO with different  
 countries on same continent on 80/40 m; 3  
 points per QSO with different continent on  
 20/15/10 m; 6 points per QSO with different  
 continent on 80/40 m  
 Multipliers: Each prefix once  
 Score Calculation: Total score = total QSO  
 points x total mults

Submit logs by: 23:59 UTC 17 February 2026  
 E-mail logs to: (none)  
 Upload log at: [www.cqwprrty.com/logcheck/](http://www.cqwprrty.com/logcheck/)  
 Mail logs to: (none)  
 Find rules at: [www.cqwprrty.com/rules.htm](http://www.cqwprrty.com/rules.htm)



PODXS 070 Club Valentine Sprint  
 00:00 - 23:59 UTC 14 February  
 Geographic Focus: Worldwide  
 Participation: Worldwide  
 Mode: PSK31  
 Bands: 160, 80, 40 m  
 Classes: OM (QRP/LP/MP/HP); YL  
 (QRP/LP/MP/HP)  
 Max operating hours: 6  
 Max power: HP: 100 watts; MP: 50 watts; LP:  
 25 watts; QRP: 5 watts  
 Exchange: Name, OM or YL and state, province  
 or country  
 Work stations: Once per band  
 QSO Points: 1 point per QSO with OM; 2 points  
 per QSO with YL  
 Multipliers: Each state, province and DXCC  
 country once only  
 Score Calculation: Total score = total QSO  
 points x total mults  
 Submit logs by: 21 February 2026  
 E-mail logs to: (none)  
 Upload log at: <http://hamclubs.info/scorer/>  
 Mail logs to: (none)  
 Find rules at: [www.podxs070.com/o70-club-sponsored-contests/valentine-sprint](http://www.podxs070.com/o70-club-sponsored-contests/valentine-sprint)

Asia-Pacific Spring CW Sprint  
 11:00 - 13:00 UTC 14 February  
 Geographic Focus: Asia/Pacific  
 Participation: Worldwide  
 Mode: CW  
 Bands: 40, 20 m  
 Classes: Single Op Single Radio  
 Max power: legal limit in each country  
 Exchange: RST and serial no

Work stations: Once per band  
 QSO Points: Asia-Pacific: 1 point per QSO; Non-Asia-Pacific: 1 point per QSO with an Asia-Pacific station  
 Multipliers: Each prefix once  
 Score Calculation: Total score = total QSO points x total mults  
 Submit logs by: 21 February 2026  
 E-mail logs to: [apsprint@jsfc.org](mailto:apsprint@jsfc.org)  
 Mail logs to: (none)  
 Find rules at:  
<http://jsfc.org/apsprint/aprule.txt>



SKCC Weekend Sprintathon  
 12:00 UTC 14 February to 24:00 UTC 15 February  
 Geographic Focus: Worldwide  
 Participation: Worldwide  
 Awards: Worldwide  
 Mode: CW  
 Bands: 160, 80, 40, 20, 15, 10, 6 m  
 Classes: Single Op - QRP, low or high; Multi-Op  
 Exchange: RST, state, province or country, name and SKCC no or NONE  
 Work stations: Once per band  
 QSO Points: 1 point per QSO  
 Bonus Points: (see rules)  
 Multipliers: Each state, province, or country once  
 Score Calculation: Total score = (total QSO points x total mults) and bonus points  
 Submit logs by: 23:59 UTC 22 February 2026  
 Post log summary at:  
[www.skccgroup.com/operating\\_activities/weekend\\_sprintathon/submit-display.php](http://www.skccgroup.com/operating_activities/weekend_sprintathon/submit-display.php)  
 Mail logs to: (none)  
 Find rules at:  
[www.skccgroup.com/operating\\_activities/weekend\\_sprintathon/](http://www.skccgroup.com/operating_activities/weekend_sprintathon/)

KCJ Topband Contest  
 12:00 UTC 14 February to 12:00 UTC 15 February

Geographic Focus: Worldwide  
 Participation: Worldwide  
 Mode: CW  
 Bands: 160 m Only  
 Classes: Single Op - QRP or high; Multi-Op  
 Max power: HP: >5 watts; QRP: 5 watts  
 Exchange: JA: RST and Prefecture/District Code; non-JA: RST and CQ Zone  
 QSO Points: JA: 1 point per QSO with JA station; JA: 2 points per QSO with non-JA station; Non-JA: 2 points per QSO with JA station; Non-JA: 1 point per QSO with non-JA station  
 Multipliers: Each JA prefecture/district; JA: Each CQ Zone  
 Score Calculation: Total score = total QSO points x total mults  
 Submit logs by: 15:00 UTC 2 March 2026  
 E-mail logs to: [2025topstest@kcj-cw.com](mailto:2025topstest@kcj-cw.com)  
 Upload log at: [www.kcj-cw.com/contest/?DX](http://www.kcj-cw.com/contest/?DX)  
 Mail logs to: Mr. Hitoshi Tanaka JH4RAL, 4-31-13-513, Ohe, Ohtsu-City, Shiga, 520-2141 Japan  
 Find rules at: [www.kcj-cw.com/](http://www.kcj-cw.com/)

Dutch PACC Contest  
 12:00 UTC 14 February to 12:00 UTC 15 February  
 Geographic Focus: The Netherlands  
 Participation: Worldwide  
 Mode: CW, SSB  
 Bands: 160, 80, 40, 20, 15, 10 m  
 Classes: SOAB - CW, SSB or mixed - low or high; SOAB Mixed QRP; Single Op Single Band CW; Single Op Single Band SSB; Single Op Limited Low - CW, SSB or mixed Novice Tech - PA only; Multi-One Mixed - PA only; Multi-Two Mixed - PA only; Multi-Unlimited Mixed; SWL  
 Max power: HP: >100 watts; LP: 100 watts; QRP: 5 watts  
 Exchange: PA: RS(T) and province; non-PA: RS(T) and serial no  
 Work stations: Once per band per mode  
 QSO Points: 1 point per QSO with a PA station  
 Multipliers: PA: DXCC countries once per band per mode; PA: Call areas once per band per mode (see rules); non-PA: PA provinces once per band per mode  
 Score Calculation: Total score = total QSO points x total mults  
 Submit logs by: 23:59 UTC 20 February 2026

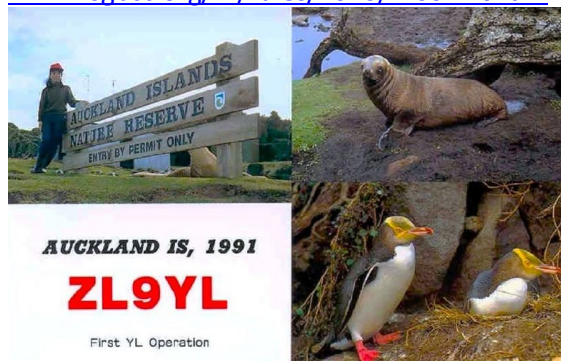
E-mail logs to: (none)  
Upload log at: <https://contest.veron.nl/PACC/>  
Mail logs to: PACC Contest Manager, c/o  
VERON Central Bureau, PO Box 1166, 6801 BD  
Arnhem, The Netherlands  
Find rules at: <https://pacc.veron.nl/>

OMISS QSO Party  
15:00 UTC 14 February to 15:00 UTC 15  
February  
Mode: SSB  
Bands: 160, 80, 40, 20, 15, 10 m  
Classes: Single Op  
Exchange: RS, state, province or DX and OMISS  
no, if member  
Work stations: Once per band  
QSO Points: 2 points per QSO with OMISS  
member; 1 point per QSO with non-member;  
Bonus: add 500 points to score if mobile for  
entire contest  
Multipliers: Each US state/DC once; Each VE  
province once; 1 DX country once; Power: <10  
W = x 3, 100 W = x 2, >100 W = x 1  
Score Calculation: Total score = (total QSO  
points x total mults x power mult) and bonus  
points  
Submit logs by: 1 March 2026  
E-mail logs to: (none)  
Upload log at:  
[www.omiss.net/Facelift/gsoElectronic.php](http://www.omiss.net/Facelift/gsoElectronic.php)  
Mail logs to: (none)  
Find rules at:  
[www.omiss.net/Facelift/qsoparty.php](http://www.omiss.net/Facelift/qsoparty.php)

WAB 1,8 MHz Phone  
19:00 - 23:59 UTC 14 February  
Mode: SSB  
Bands: 160 m Only  
Classes: Single Op - fixed, mobile or portable;  
Multi-Op - fixed, mobile or portable; Low  
Power; SWL - fixed, mobile or portable  
Max power: non-Low: >10 watts; Low: 10  
watts  
Exchange: British Isles: RS, serial no and WAB  
square; Other: RS, serial no and country  
QSO Points: (see rules)  
Multipliers: (see rules)  
Score Calculation: Total score = total QSO  
points x total mults  
Submit logs by: 24 February 2026  
E-mail logs to: [aebbooks@ntlworld.com](mailto:aebbooks@ntlworld.com)

Mail logs to: Tony Beardsley, G3XKT, 14 York  
Avenue, Sandiacre, Nottingham NG10 5HB,  
United Kingdom  
Find rules at:  
[http://wab.intermip.net/Contest%20Rules.php  
#OtherRules](http://wab.intermip.net/Contest%20Rules.php#OtherRules)

RSGB 1,8 MHz Contest  
20:00 - 23:00 UTC 14 February  
Mode: SSB  
Bands: 160 m Only  
Classes: Single Op – UK or overseas – assisted  
or unassisted  
Max power: 400 watts  
Exchange: UK: RST, serial no and District Code;  
non-UK: RST and serial no  
QSO Points: 2 points per QSO; 5 additional  
points for first QSO with each UK district; UK  
stations: 5 additional points for first QSO with  
each country outside of UK  
Multipliers: (none)  
Score Calculation: Total score = total QSO  
points  
Submit logs by: 23:59 UTC 15 February 2026  
Upload log at: [www.rsgbcc.org/cgi-  
bin/hfenter.pl](http://www.rsgbcc.org/cgi-bin/hfenter.pl)  
Mail logs to: (none)  
Find rules at:  
[www.rsgbcc.org/hf/rules/2026/r160m.shtml](http://www.rsgbcc.org/hf/rules/2026/r160m.shtml)



Balkan HF Contest  
13:00 - 17:00 UTC 15 February  
Mode: CW, SSB  
Bands: 80, 40 m  
Classes: Category A; Category B  
Max power: Cat A: 1 000 W input; Cat B: 10 W  
input  
Exchange: RS(T) and QSO no  
Work stations: Once per band  
QSO Points: 1 point per QSO with category A; 2  
points per QSO with category B  
Multipliers: Each Balkan prefix once per band

Score Calculation: Total score = (total 80 m QSO points x total 80 m mults) and (total 40 m QSO points x total 40 m mults)  
Submit logs by: 23:59 UTC 22 February 2026  
E-mail logs to: [bfra\\_hq@hotmail.com](mailto:bfra_hq@hotmail.com) with copy to [panayotdanev@yahoo.com](mailto:panayotdanev@yahoo.com)  
Mail logs to: (none)  
Find rules at: <https://bfra.bg/en/news/578>

Run for the Bacon QRP Contest  
23:00 UTC 15 February to 01:00 UTC 16 February  
Geographic Focus: Worldwide  
Participation: Worldwide  
Mode: CW  
Bands: 160, 80, 40, 20, 15, 10 m  
Classes: Single Band; All Band  
Max power: 5 watts  
Exchange: RST, state, province or country and member no or power  
Work stations: Once per band  
QSO Points: 1 point per QSO with non-member; 3 points per QSO with member on same continent; 5 points per QSO with member on different continent  
Multipliers: Each state, province, or country once; Multiply mults by 2 if >50 members worked  
Score Calculation: Total score = total QSO points x total mults  
Submit logs by: 21 February 2026  
E-mail logs to: (none)  
Upload log at:  
<http://qrcontest.com/pigrun/autolog.php>  
Mail logs to: (none)  
Find rules at: <http://qrcontest.com/pigrun/>



K1USN Slow Speed Test  
00:00 - 01:00 UTC 16 February  
Geographic Focus: Worldwide  
Participation: Worldwide  
Mode: CW  
Bands: 160, 80, 40, 20, 15, 10 m  
Classes: Single Op - QRP, low or high

Max power: HP: >100 watts; LP: 100 watts; QRP: 5 watts  
Exchange: Maximum 20 wpm – name and state, province or country  
Work stations: Once per band  
QSO Points: 1 point per QSO  
Multipliers: Each state, province or country once per band; W/VE do not count as country mults  
Score Calculation: Total score = total QSO points x total mults  
Submit logs by: 23:59 UTC 18 February 2026  
Post log summary at: [www.3830scores.com](http://www.3830scores.com)  
Mail logs to: (none)  
Find rules at: [www.k1usn.com/sst.html](http://www.k1usn.com/sst.html)

ICWC Medium Speed Test  
13:00 - 14:00 UTC and 19:00 - 20:00 UTC 16 February and 03:00 - 04:00 UTC 17 February  
Geographic Focus: Worldwide  
Participation: Worldwide  
Mode: CW  
Bands: 160, 80, 40, 20, 15, 10 m  
Classes: Single Op - QRP, low or high  
Max power: HP: >100 watts; LP: 100 watts; QRP: 5 watts  
Exchange: Name and QSO no  
Work stations: Once per band  
QSO Points: 1 point per QSO  
Multipliers: Each call once  
Score Calculation: Total score = total QSO points x total mults  
Submit logs by: 04:00 UTC 19 February 2026  
Post log summary at: [www.3830scores.com](http://www.3830scores.com)  
Mail logs to: (none)  
Find rules at:  
<https://internationalcouncil.org/mst-contest/>

OK1WC Memorial (MWC)  
16:30 - 17:29 UTC 16 February  
Geographic Focus: Worldwide  
Participation: Worldwide  
Mode: CW  
Bands: 80, 40 m  
Classes: Single Op All Band - QRP or low; Single Op Single Band - QRP or low  
Max power: LP: 100 watts; QRP: 5 watts  
Exchange: RST and serial no  
Work stations: Once per band  
QSO Points: 1 point per QSO

Multipliers: Each last character of worked station call suffix once per band  
Score Calculation: Total score = total QSO points x total mults  
Submit logs by: 06:00 UTC 20 February 2026  
E-mail logs to: (none)

Upload log at: <https://memorial-ok1wc.cz/index.php?page=logs>  
Mail logs to: (none)  
Find rules at: <https://memorial-ok1wc.cz/index.php?page=rules2>

## Next Week's Contests

Worldwide Sideband Activity Contest, 01:00 - 01:59 UTC 17 February  
QRP Fox Hunt, 02:00 - 03:30 UTC 18 February  
Phone Weekly Test, 02:30 - 03:00 UTC 18 February  
A1Club AWT, 11:45 - 13:00 UTC 18 February  
CWops Test, 13:00 - 14:00 UTC and 19:00 - 20:00 UTC 18 February and 03:00 - 04:00 UTC and 07:00 - 08:00 UTC 19 February  
Mini-Test 40, 17:00 - 17:59 UTC 18 February  
Mini-Test 80, 18:00 - 18:59 UTC 18 February  
AGCW Semi-Automatic Key Evening, 19:00 - 20:30 UTC 18 February  
Walk for the Bacon QRP Contest, 00:00 - 01:00 UTC 19 February and 02:00 - 03:00 UTC 20 February  
NTC QSO Party, 19:00 - 20:00 UTC 19 February  
NCCC FT4 Sprint, 01:00 - 01:30 UTC 20 February  
Weekly RTTY Test, 01:45 - 02:15 UTC 20 February  
QRP Fox Hunt, 02:00 - 03:30 UTC 20 February  
NCCC Sprint, 02:30 - 03:00 UTC 20 February  
K1USN Slow Speed Test, 20:00 - 21:00 UTC 20 February  
ARRL International DX CW Contest, 00:00 UTC 21 February to 24:00 UTC 22 February  
REF SSB Contest, 06:00 UTC 21 February to 18:00 UTC 22 February  
Russian PSK WW Contest, 12:00 UTC 21 February to 11:59 UTC 22 February  
Feld Hell Sprint, 19:00 - 20:59 UTC 21 February  
World Wide Argentina DX Contest, 00:00 - 23:59 UTC 22 February  
High Speed Club CW Contest, 14:00 - 17:00 UTC 22 February  
Classic Exchange, Phone, 14:00 UTC 22 February to 08:00 UTC 23 February 14:00 UTC 24 February to 08:00 UTC 25 February  
K1USN Slow Speed Test, 00:00 - 01:00 UTC 23 February  
QCX Challenge, 13:00 - 14:00 UTC and 19:00 - 20:00 UTC 23 February and 03:00 - 04:00 UTC 24 February  
ICWC Medium Speed Test, 13:00 - 14:00 UTC and 19:00 - 20:00 UTC 23 February and 03:00 - 04:00 UTC 24 February  
OK1WC Memorial, 16:30 - 17:29 UTC 23 February  
RSGB FT4 Contest, 20:00 - 22:00 UTC 23 February  
Worldwide Sideband Activity Contest, 01:00 - 01:59 UTC 24 February

*Items used with acknowledgement to the ARRL Letter, the ARRL DX News, 425 DX Bulletin, DXNL Newsletter and DX-World*

# BOMBASTIK

## AMATEUR RADIO ACCESSORIES

Bombastik Crew Offer Great Customer Service and Quality Above All.

COUNTRY WIDE SHIPPING

### OUR SERVICE:

- ✓ **Antennas:** See our high quality hand crafted antennas and accessories.
- ✓ **Radios:** Premium-quality Chinese radios. No cheap knockoffs—only high-spec, unbeatable value!
- ✓ **Accessories:** A wide range of top-quality equipment that you'll be proud to own.



☎ 082 785 7763

🌐 <https://www.bombastik.co.za>