



# Happenings 1151

<https://mysarl.org.za/hf/>

YOUNGSTERS ON THE AIR

## The SARL Youth QSO Party

From 12:00 - 13:00 UTC on Monday 16 June using SSB only on 40 metres. The exchange is a RS report and age of the operator. QSO Points: 5 points per QSO between operators 25 or younger; 2 points per QSO between 25 or younger operator and a 26 or older operator; 1 point per QSO between operators 26 or older. Submit your log by 21:59 UTC on Saturday 21 June 2025 to [zr3vdk@outlook.com](mailto:zr3vdk@outlook.com). Find the rules at <https://mysarl.org.za/contest-resources/>

## The 2025 IARU HF World Championships

The 2025 IARU HF World Championships begins at 12:00 UTC on Saturday 12 July and runs through to 11:59 UTC on Sunday 13 July. The contest objective is to support amateur self-training in radiocommunications including improving amateur operating skills, conducting technical investigations and intercommunicating with other amateurs around the world, especially IARU member society headquarters stations. Activity takes place on 160, 80, 40, 20, 15 and 10 metres and both phone and CW may be used. Contact stations only once per band and mode.



All stations send a signal report and ITU zone, for South Africa, that is Zone 57. Headquarters stations operated by an

- June**
- 14 - World Blood Donor Day
  - 15 - Father's Day
  - 16 - Youth Day and SARL Youth QSO Party
  - 17 - World QRP Day
  - 21 - Winter Solstice @ 02:40 UTC
  - 23 - International Widows' Day
  - 25 - the Sandton Power Hour Tech Talk
  - 27 - Provincial schools close
  - 27 to 29 - Ham Radio, Friedrichshafen
  - 28 and 29 - the ARRL Field Day
  - 30 - International Asteroid Day and the end of the 2024/25 SARL Financial Year
- July**
- 1 - Start of the 2025/26 SARL Financial Year and registration for the October RAE opens
  - 5 - the SARL Newbie QSO Party, the ZS4SRK Club meeting and the ZS6PTA Flea Market
  - 6 - World Rural Development Day and the ZS5 QSO Party
  - 12 and 13 - the IARU HF Championships
  - 15 - World Youth Skills Day and Delville Wood Day
  - 19 - SARL QRP Contest

IARU National Society send the abbreviation for their society instead of zone. (i.e. ZS9HQ sends SARL). Stations operated by the IARU Administrative Council and the three IARU regional Executive committees send AC, R1, R2 and R3 as appropriate. The QSO point value of a contact depends on the location of the station. Upload your log at [contest-log-submission.arri.org](http://contest-log-submission.arri.org) no later than seven (7) days after the contest is over at 11:59 UTC. Get all the information at [www.arri.org/iaru-hf-world-championship](http://www.arri.org/iaru-hf-world-championship).

The Rules allow for six stations to be active on SSB and six stations to be active on CW during the contest – ZS9HQ SSB on 10 m and ZS9HQ CW on 10 m and so for each band. If you want to be part of the ZS9HQ team for the 2025 IARU HF Championships, contact the Contest Working Group and tell them which band and mode you would like to operate. Send an e-mail to [contest@sarl.org.za](mailto:contest@sarl.org.za).

### **DX from Africa**

(These count towards your All Africa Award)

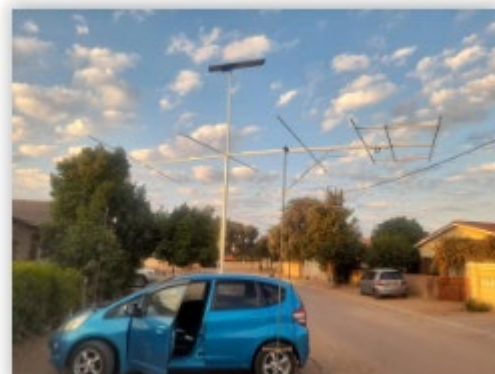
Tunisia, 3V. Jerry, SQ5HG, operates holiday-style from the club station 3V8SS between 9 and 16 June. QSL via LX1NO

Botswana, A2. John, A2NEW, posted the following on 6 June. "I am an individual who has been residing in Botswana since 2011. I visited Australia in 2018 and collected my certificate. Then I tried applying for the license to find out the licensing requirements for Botswana is different to most other countries. I was required to get the radio first. I didn't have any available money to purchase a radio at the time. I had been looking for a radio and in December 2023 I was visiting some friends in Zimbabwe, I asked if they knew anyone who has a HF rig. I found a Kenwood TS-480hx with a SGC SG-230 ATU I negotiated a payment plan then I returned to Botswana with it. I started working on getting my license. On the 22nd of January 2024, I received the radio license. I was allocated a difficult call, so I requested A2NEW because of the similarities to my previous call of VK2NEN. I have no intentions leaving Botswana anytime soon. I am currently using a vertical whip mounted to my car, but I will setup a dipole when I have the time. I also would love to build a cubical quad or a trapped Yagi for more consistent DX. I would like to be active with SSTV, FT8 & SSB. Unfortunately, I am not proficient at CW to the standard where I will not disappoint people with my slowness and mistakes. I am willing to operate all HF bands. I have no schedule at the moment, but I will try to be active most evenings from about 16:00 – 19:00 UTC, possibly be more active on the weekends.

I have made a Moxon and a 6 element Yagi for 6m. I also use a 1/4 wave whip for 6m and currently have a 9 element LFA Yagi for 2m. I have also made capacitive hats for the whip to make it resonant on 12m, 15m & 17m. I also made myself a whip for 10m & 20m these are the main bands you can find me on most days and sometimes on 160 - 30m FT8. Recently, I installed a homebrew inverted V for 40m & 15m.

I have plans to expand my antenna and rig setup when funds are available. I wish to get a hex beam and another rig for 6 m if you would like to help me with these goals, please don't hesitate to send me an email expressing your desire on the address attached to my profile. Thank you all in advance 73"

QSL via EA7FTR. John states, "Due to my recent activity on SSB, please crosscheck logbook for valid QSOs. All valid QSOs will be logged on QRZCQ, QRZ.com, ClubLogs & LoTW.

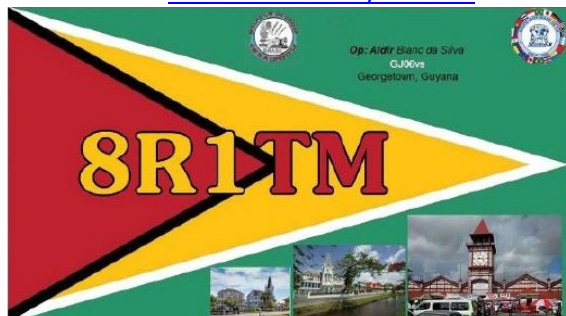


### **African Islands**

## Contest Calendar

This week's contests as compiled by Bruce Horn, WA7BNM. The period covered is from 9 to 16 June 2025.

**K1USN Slow Speed Test**  
00:00 - 01:00 UTC 9 June  
Geographic Focus: Worldwide  
Participation: Worldwide  
Mode: CW  
Bands: 160, 80, 40, 20, 15, 10 m  
Classes: Single Op - QRP, low or high  
Max power: HP: >100 watts; LP: 100 watts;  
QRP: 5 watts  
Exchange: Maximum 20 wpm - name and state, province or country  
Work stations: Once per band  
QSO Points: 1 point per QSO  
Multipliers: Each state, province or country once per band; W/VE do not count as country mults  
Score Calculation: Total score = total QSO points x total mults  
Submit logs by: 23:59 UTC 11 June 2025  
Post log summary at: [www.3830scores.com](http://www.3830scores.com)  
Mail logs to: (none)  
Find rules at: [www.k1usn.com/sst.html](http://www.k1usn.com/sst.html)



**ICWC Medium Speed Test**  
13:00 - 14:00 UTC and 19:00 - 20:00 UTC 9 June and 03:00 - 04:00 UTC 10 June  
Geographic Focus: Worldwide  
Participation: Worldwide  
Mode: CW  
Bands: 160, 80, 40, 20, 15, 10 m  
Classes: Single Op - QRP, low or high  
Max power: HP: >100 watts; LP: 100 watts;  
QRP: 5 watts  
Exchange: Name and QSO no  
Work stations: Once per band  
QSO Points: 1 point per QSO  
Multipliers: Each call once  
Score Calculation: Total score = total QSO points x total mults

Submit logs by: 04:00 UTC 12 June 2025  
Post log summary at: [www.3830scores.com](http://www.3830scores.com)  
Mail logs to: (none)  
Find rules at: <https://internationalcwcouncil.org/mst-contest/>

**OK1WC Memorial (MWC)**  
16:30 - 17:29 UTC 9 June  
Geographic Focus: Worldwide  
Participation: Worldwide  
Mode: CW  
Bands: 80, 40 m  
Classes: Single Op All Band - QRP or low; Single Op Single Band - QRP or low  
Max power: LP: 100 watts; QRP: 5 watts  
Exchange: RST and serial no  
Work stations: Once per band  
QSO Points: 1 point per QSO  
Multipliers: Each last character of worked station call suffix once per band  
Score Calculation: Total score = total QSO points x total mults  
Submit logs by: 06:00 UTC 13 June 2025  
E-mail logs to: (none)  
Upload log at: <https://memorial-ok1wc.cz/index.php?page=logs>  
Mail logs to: (none)  
Find rules at: <https://memorial-ok1wc.cz/index.php?page=rules2/>

**Worldwide Sideband Activity Contest**  
01:00 - 01:59 UTC 10 June  
Geographic Focus: Worldwide  
Participation: Worldwide  
Mode: SSB  
Bands: 160, 80, 40, 20, 15, 10, 6 m  
Classes: Single Op - QRP, low or high  
Overlay: Youth (26 years old or younger); Youth YL (female 26 years old or younger); YL (female older than 26 years)  
Max power: HP: 1 500 watts; LP: 100 watts;  
QRP: 5 watts  
Exchange: RS and age group (OM, YL, Youth YL or Youth)  
Work stations: Once per band

QSO Points: 1 point per QSO with OM; 5 points per QSO with YL; 10 points per QSO with Youth; 15 points per QSO with Youth YL  
Multipliers: Each DXCC once per band  
Score Calculation: Total score = total QSO points x total mults  
Submit logs by: 01:59 UTC 11 June 2025  
E-mail logs to: (none)  
Upload log at: <https://logs.wwsac.com/>  
Mail logs to: (none)  
Find rules at: <https://wwsac.com/rules.html>

DARC CW-Training Contest  
18:00 - 18:59 UTC 10 June  
Participation: Worldwide  
Mode: CW  
Bands: 80 m Only  
Classes: Single-Op  
Max power: LP: 100 watts  
Exchange: DE: RST and DOK/NM  
non-DE: RST and serial no  
QSO Points: 1 point per QSO  
Multipliers: Each prefix; Each DOK  
Score Calculation: Total score = total QSO points x total mults  
Submit logs by: 17 June 2025  
E-mail logs to: (none)  
Upload log at:  
<https://dxhf2.darc.de/~accwlog/upload.cgi?form=referat&lang=de>  
Mail logs to: (none)  
Find rules at: [www.darc.de/der-club/referate/conteste/cwa/darc-cw-training-rules/](http://www.darc.de/der-club/referate/conteste/cwa/darc-cw-training-rules/)

NAQCC CW Sprint  
00:30 - 02:30 UTC 11 June  
Geographic Focus: United States/Canada  
Participation: Worldwide  
Mode: CW  
Bands: 80, 40, 20 m  
Classes: (none)  
Max power: 5 watts  
Exchange: RST, state, province or country and NAQCC no or power  
Work stations: Once per band  
QSO Points: 1 point per QSO with non-member; 2 points per QSO with member  
Multipliers: Each state, province, or country once; Key Type Mult: 2x if straight key, 1.5x if bug, 1x if other

Score Calculation: Total score = total QSO points x total mults x key type mult  
Submit logs by: 23:59 UTC 14 June 2025  
E-mail logs to: (none)  
Upload log at:  
<http://naqcc.info/autologger.php>  
Mail logs to: (none)  
Find rules at:  
[http://naqcc.info/sprint\\_rules.html](http://naqcc.info/sprint_rules.html)

Phone Weekly Test  
02:30 - 03:00 UTC 11 June  
Geographic Focus: North America  
Participation: Worldwide  
Mode: SSB  
Bands: 160, 80, 40, 20, 15 m  
Classes: Single Op  
Max power: 100 watts  
Exchange: NA: Name and state, province or country; non-NA: Name  
Work stations: Once per band  
QSO Points: NA station: 1 point per QSO; non-NA station: 1 point per QSO with an NA station  
Multipliers: Each US state (including KH6/KL7) once per band; Each VE province/territory once per band; Each North American country (except W/VE) once per band  
Score Calculation: Total score = total QSO points x total mults  
Submit logs by: 03:00 UTC 13 June 2025  
E-mail logs to: (none)  
Post log summary at: [www.3830scores.com](http://www.3830scores.com)  
Mail logs to: (none)  
Find rules at:  
[www.perluma.com/Phone Fray Contest Rule s.pdf](http://www.perluma.com/Phone_Fray_Contest_Rule_s.pdf)



A1Club AWT  
11:45 - 13:00 UTC 11 June  
Geographic Focus: Worldwide  
Participation: Worldwide  
Mode: CW  
Bands: 160, 80, 40, 20, 15, 10 m

Classes: Single Op - QRP, low or high  
 Max power: HP: >100 watts; LP: 100 watts;  
 QRP: 5 watts  
 Exchange: Member: RST and name  
 Work stations: Once per band  
 QSO Points: 1 point per QSO  
 Multipliers: Each call once  
 Score Calculation: Total score = total QSO  
 points x total mults  
 Submit logs by: 16 June 2025  
 Post log summary at: [www.3830scores.com](http://www.3830scores.com)  
 Mail logs to: (none)  
 Find rules at: <https://a1club.org/contest/awt/>



CWops Test (CWT)  
 13:00 - 14:00 UTC and 19:00 - 20:00 UTC 11  
 June and 03:00 - 04:00 UTC and 07:00 - 08:00  
 UTC 12 June  
 Geographic Focus: Worldwide  
 Participation: Worldwide  
 Awards: Worldwide  
 Mode: CW  
 Bands: 160, 80, 40, 20, 15, 10 m  
 Classes: Single Op - QRP, low or high  
 Max power: HP: >100 watts; LP: 100 watts;  
 QRP: 5 watts  
 Exchange: Member: Name and member no or  
 CWA; non-Member: Name and state, province  
 or country  
 Work stations: Once per band  
 QSO Points: 1 point per QSO  
 Multipliers: Each call once  
 Score Calculation: Total score = total QSO  
 points x total mults  
 Submit logs by: 08:00 UTC 14 June 2025  
 Post log summary at: [www.3830scores.com](http://www.3830scores.com)  
 Mail logs to: (none)  
 Find rules at: <https://cwops.org/cwops-tests/>

Mini-Test 40  
 17:00 - 17:59 UTC 11 June  
 Geographic Focus: Worldwide  
 Participation: Worldwide  
 Mode: CW  
 Bands: 40 m Only

Classes: Single Op - QRP, low or high  
 Max power: HP: >100 watts; LP: 100 watts;  
 QRP: 5 watts  
 Exchange: RST and serial no  
 Work stations: Once per 10-minute period  
 QSO Points: 1 point per QSO  
 Multipliers: Each call once  
 Score Calculation: Total score = total QSO  
 points x total mults  
 Submit logs by: 13 June 2025  
 Upload log at: <https://ua9qcq.com/hf-logs.php>  
 Mail logs to: (none)  
 Find rules at: <http://minitest.narod.ru/>

Mini-Test 80  
 18:00 - 18:59 UTC 11 June  
 Geographic Focus: Worldwide  
 Participation: Worldwide  
 Mode: CW  
 Bands: 80 m Only  
 Classes: Single Op - QRP, low or high  
 Max power: HP: >100 watts; LP: 100 watts;  
 QRP: 5 watts  
 Exchange: RST and serial no  
 Work stations: Once per 10-minute period  
 QSO Points: 1 point per QSO  
 Multipliers: Each call once  
 Score Calculation: Total score = total QSO  
 points x total mults  
 Submit logs by: 13 June 2025  
 Upload log at: <https://ua9qcq.com/hf-logs.php>  
 Mail logs to: (none)  
 Find rules at: <http://minitest.narod.ru/>

RSGB 80 m CW Club Championship  
 19:00 - 20:30 UTC 11 June  
 Geographic Focus: United Kingdom  
 Participation: Worldwide  
 Awards: United Kingdom  
 Mode: CW  
 Bands: 80 m Only  
 Classes: (none)  
 Exchange: RST and serial no  
 QSO Points: 1 point per QSO  
 Multipliers: (none)  
 Score Calculation: (see rules)  
 Submit logs by: 23:59 UTC 12 June 2025  
 Upload log at: [www.rsgbcc.org/cgi-  
bin/hfenter.pl](http://www.rsgbcc.org/cgi-bin/hfenter.pl)  
 Mail logs to: (none)

Find rules at:  
[www.rsgbcc.org/hf/rules/2025/r80\\_mcc.shtml](http://www.rsgbcc.org/hf/rules/2025/r80_mcc.shtml)

NCCC FT4 Sprint  
01:00 - 01:30 UTC 13 June  
Geographic Focus: North America  
Participation: Worldwide  
Mode: FT4  
Bands: (see rules)  
Classes: (none)  
Max power: 100 watts  
Exchange: 4-character grid square  
QSO Points: 1 point per QSO  
Multipliers: Each 4-character grid square once per band  
Score Calculation: Total score = total QSO points x total mults  
Submit logs by: 15 June 2025  
E-mail logs to: (none)  
Upload log at: <https://lotw.arrl.org/>  
Post log summary at: [www.3830scores.com/](http://www.3830scores.com/)  
Mail logs to: (none)  
Find rules at: [www.ncccsprint.com/ft4ns.html](http://www.ncccsprint.com/ft4ns.html)

Weekly RTTY Test  
01:45 - 02:15 UTC 13 June  
Geographic Focus: North America  
Participation: Worldwide  
Mode: RTTY  
Bands: 80, 40, 20, 15, 10 m  
Classes: Single-Op - QRP or low  
Max power: LP: 100 watts; QRP: 5 watts  
Exchange: Name and state, province or country  
Work stations: Once per band  
QSO Points: 1 point per QSO  
Multipliers: Each call sign once  
Score Calculation: Total score = total QSO points x total mults  
Submit logs by: 15 June 2025  
E-mail logs to: (none)  
Post log summary at: [www.3830scores.com/](http://www.3830scores.com/)  
Mail logs to: (none)  
Find rules at:  
<https://radiosport.world/wrt.html>

NCCC Sprint  
02:30 - 03:00 UTC 13 June  
Geographic Focus: North America  
Participation: Worldwide  
Mode: CW

Bands: (see rules)  
Classes: (none)  
Max power: 100 watts  
Exchange: Serial no, name and QTH  
Score Calculation: Total score = total QSO points x total mults  
Submit logs by: 15 June 2025  
E-mail logs to: (none)  
Post log summary at: [www.3830scores.com/](http://www.3830scores.com/)  
Mail logs to: (none)  
Find rules at:  
<https://ncccsprint.com/rules.html>



K1USN Slow Speed Test  
20:00 - 21:00 UTC 13 June  
Geographic Focus: Worldwide  
Participation: Worldwide  
Mode: CW  
Bands: 160, 80, 40, 20, 15, 10 m  
Classes: Single Op - QRP, low or high  
Max power: HP: >100 watts; LP: 100 watts;  
QRP: 5 watts  
Exchange: Maximum 20 wpm - name and state, province or country  
Work stations: Once per band  
QSO Points: 1 point per QSO  
Multipliers: Each state, province or country once per band; W/VE do not count as country mults  
Score Calculation: Total score = total QSO points x total mults  
Submit logs by: 23:59 UTC 15 June 2025  
Post log summary at: [www.3830scores.com](http://www.3830scores.com/)  
Mail logs to: (none)  
Find rules at: [www.k1usn.com/sst.html](http://www.k1usn.com/sst.html)

YB ORARI DX Contest  
00:00 - 23:59 UTC 14 June  
Geographic Focus: Worldwide  
Participation: Worldwide  
Mode: SSB  
Bands: 80, 40, 20, 15, 10 m

Classes: Single Op All Band  
 Exchange: YB: RS and "ORARI"; non-YB: RS and "DX"  
 Work stations: Once per band  
 QSO Points: 5 points per QSO with YB station; 1 point per QSO with non-YB station  
 Multipliers: Each prefix once per band; Each DXCC country once per band; Each YB station  
 Score Calculation: Total score = total QSO points x total mults  
 Submit logs by: 23:59 UTC 21 June 2025  
 E-mail logs to: (none)  
 Upload log at: [www.oraricontest.id/log-submission/](http://www.oraricontest.id/log-submission/)  
 Mail logs to: (none)  
 Find rules at: [www.oraricontest.id/](http://www.oraricontest.id/)



Asia-Pacific SSB Sprint  
 11:00 - 13:00 UTC 14 June  
 Geographic Focus: Asia/Pacific  
 Participation: Worldwide  
 Mode: SSB  
 Bands: 20, 15 m  
 Classes: Single Op Single Radio  
 Max power: maximum legal  
 Exchange: RS and serial no  
 Work stations: Once per band  
 QSO Points: Asia-Pacific: 1 point per QSO; Non-Asia-Pacific: 1 point per QSO with an Asia-Pacific station  
 Multipliers: Each prefix once  
 Score Calculation: Total score = total QSO points x total mults  
 Submit logs by: 21 June 2025  
 E-mail logs to: [apsprint@jsfc.org](mailto:apsprint@jsfc.org)  
 Mail logs to: (none)  
 Find rules at: <http://jsfc.org/apsprint/aprule.txt>

SKCC Weekend Sprintathon  
 12:00 UTC 14 June to 24:00 UTC 15 June

Geographic Focus: Worldwide  
 Participation: Worldwide  
 Awards: Worldwide  
 Mode: CW  
 Bands: 160, 80, 40, 20, 15, 10, 6 m  
 Classes: Single Op - QRP, low or high; Multi-Op  
 Exchange: RST, state, province or country, name and SKCC no or NONE  
 Work stations: Once per band  
 QSO Points: 1 point per QSO  
 Bonus Points: (see rules)  
 Multipliers: Each state, province, or country once  
 Score Calculation: Total score = (total QSO points x total mults) and bonus points  
 Submit logs by: 23:59 UTC 22 June 2025  
 Post log summary at: [www.skccgroup.com/operating\\_activities/weekend\\_sprintathon/submit-display.php](http://www.skccgroup.com/operating_activities/weekend_sprintathon/submit-display.php)  
 Mail logs to: (none)  
 Find rules at: [www.skccgroup.com/operating\\_activities/weekend\\_sprintathon/](http://www.skccgroup.com/operating_activities/weekend_sprintathon/)

Portugal Day Contest  
 12:00 UTC 14 June to 12:00 UTC 15 June  
 Geographic Focus: Worldwide  
 Participation: Worldwide  
 Mode: CW, SSB  
 Bands: 80, 40, 20, 15, 10 m  
 Classes: Single Op - CW, SSB or mixed; Multi-Single - CW, SSB or mixed; Multi-Multi - CW, SSB or mixed (Distributed allowed)  
 Exchange: CT: RS(T) and District; non-CT: RS(T) and serial no  
 QSO Points: (see rules)  
 Multipliers: Each CT region (5 mult points) once per band; Each DXCC country (1 mult point) once per band  
 Score Calculation: Total score = total QSO points x total mult points  
 Submit logs by: 30 June 2025  
 E-mail logs to: [rep-concursos@rep.pt](mailto:rep-concursos@rep.pt)  
 Mail logs to: (none)  
 Find rules at: <https://portugaldaycontest.rep.pt/rules.php>

GACW WWSA CW DX Contest  
 15:00 UTC 14 June to 15:00 UTC 15 June  
 Geographic Focus: Worldwide  
 Participation: Worldwide

Mode: CW  
 Bands: 80, 40, 20, 15, 10 m  
 Classes: Single Op All Band - QRP, low or high;  
 Single Op Single Band - QRP, low or high;  
 Multi-Single; Multi-Multi  
 Max power: HP: >100 watts; LP: 100 watts;  
 QRP: 5 watts  
 Exchange: RST and CQ Zone no  
 QSO Points: 0 points per QSO with same  
 country; 1 point per QSO with different  
 country, same continent; 3 points per QSO  
 with different continent; Non-SA stations: 5  
 points per QSO with South America  
 Multipliers: Each CQ zone once per band; Each  
 country once per band  
 Score Calculation: Total score = total QSO  
 points x total mults  
 Submit logs by: 30 June 2025  
 E-mail logs to: [gacw.wwsa@gmail.com](mailto:gacw.wwsa@gmail.com)  
 Mail logs to: (none)  
 Find rules at: [www.gacw.ar/](http://www.gacw.ar/)

Run for the Bacon QRP Contest  
 23:00 UTC 15 June to 01:00 UTC 16 June  
 Geographic Focus: Worldwide  
 Participation: Worldwide  
 Mode: CW  
 Bands: 160, 80, 40, 20, 15, 10 m  
 Classes: Single Band  
 All Band  
 Max power: 5 watts  
 Exchange: RST and state, province or country  
 and member no or power  
 Work stations: Once per band  
 QSO Points: 1 point per QSO with non-  
 member; 3 points per QSO with member on  
 same continent; 5 points per QSO with  
 member on different continent  
 Multipliers: Each state, province, or country  
 once; Multiply mults by 2 if >50 members  
 worked  
 Score Calculation: Total score = total QSO  
 points x total mults  
 Submit logs by: 21 June 2025  
 E-mail logs to: (none)  
 Upload log at:  
<http://qrcontest.com/pigrun/autolog.php>  
 Mail logs to: (none)  
 Find rules at: <http://qrcontest.com/pigrun/>

K1USN Slow Speed Test

00:00 - 01:00 UTC 16 June  
 Geographic Focus: Worldwide  
 Participation: Worldwide  
 Mode: CW  
 Bands: 160, 80, 40, 20, 15, 10 m  
 Classes: Single Op - QRP, low or high  
 Max power: HP: >100 watts; LP: 100 watts;  
 QRP: 5 watts  
 Exchange: Maximum 20 wpm - name and  
 state, province or country  
 Work stations: Once per band  
 QSO Points: 1 point per QSO  
 Multipliers: Each state, province or country  
 once per band; W/VE do not count as country  
 mults  
 Score Calculation: Total score = total QSO  
 points x total mults  
 Submit logs by: 23:59 UTC 18 June 2025  
 Post log summary at: [www.3830scores.com](http://www.3830scores.com)  
 Mail logs to: (none)  
 Find rules at: [www.k1usn.com/sst.html](http://www.k1usn.com/sst.html)



SARL Youth QSO Party  
 12:00 - 13:00 UTC 16 June  
 Mode: SSB  
 Bands: 40 m Only  
 Classes: (none)  
 Exchange: RS and age  
 QSO Points: 5 points per QSO between  
 operators 25 or younger; 2 points per QSO  
 between 25 or younger operator and a 26 or

older operator; 1 point per QSO between operators 26 or older  
Multipliers: (none)  
Score Calculation: Total score = total QSO points  
Submit logs by: 21:59 UTC 21 June 2025  
E-mail logs to: [zr3vdk@outlook.com](mailto:zr3vdk@outlook.com)  
Mail logs to: (none)  
Find rules at: <https://mysarl.org.za/contest-resources/>

ICWC Medium Speed Test  
13:00 - 14:00 UTC and 19:00 - 20:00 UTC 16 June and 03:00 - 04:00 UTC 17 June  
Geographic Focus: Worldwide  
Participation: Worldwide  
Mode: CW  
Bands: 160, 80, 40, 20, 15, 10 m  
Classes: Single Op - QRP, low or high  
Max power: HP: >100 watts  
LP: 100 watts  
QRP: 5 watts  
Exchange: Name and QSO no  
Work stations: Once per band  
QSO Points: 1 point per QSO  
Multipliers: Each call once  
Score Calculation: Total score = total QSO points x total mults  
Submit logs by: 04:00 UTC 19 June 2025  
Post log summary at: [www.3830scores.com](http://www.3830scores.com)  
Mail logs to: (none)  
Find rules at:  
<https://internationalcwcouncil.org/mst-contest/>

OK1WC Memorial (MWC)  
16:30 - 17:29 UTC 16 June  
Geographic Focus: Worldwide  
Participation: Worldwide  
Mode: CW

Bands: 80, 40 m  
Classes: Single Op All Band - QRP or low; Single Op Single Band - QRP or low  
Max power: LP: 100 watts; QRP: 5 watts  
Exchange: RST and serial no  
Work stations: Once per band  
QSO Points: 1 point per QSO  
Multipliers: Each last character of worked station call suffix once per band  
Score Calculation: Total score = total QSO points x total mults  
Submit logs by: 06:00 UTC 20 June 2025  
E-mail logs to: (none)  
Upload log at: <https://memorial-ok1wc.cz/index.php?page=logs>  
Mail logs to: (none)  
Find rules at: <https://memorial-ok1wc.cz/index.php?page=rules2>

RSGB FT4 Contest  
19:00 - 21:00 UTC 16 June  
Geographic Focus: United Kingdom  
Participation: Worldwide  
Mode: FT4  
Bands: 80, 40, 20, 15, 10 m  
Classes: 100 W; 10 W  
Exchange: Signal report  
QSO Points: 1 point per QSO; 5 points per QSO with HQ stations G#6XX  
Multipliers: Each DXCC country once per band  
Each HQ station G#6XX once per band  
Score Calculation: Total score = total QSO points x total mults  
Submit logs by: 21:00 UTC 17 June 2025  
Upload log at: [www.rsgbcc.org/cgi-bin/hfenter.pl](http://www.rsgbcc.org/cgi-bin/hfenter.pl)  
Mail logs to: (none)  
Find rules at:  
[www.rsgbcc.org/hf/rules/2025/r80m\\_ft4.shtml](http://www.rsgbcc.org/hf/rules/2025/r80m_ft4.shtml)

### Next Week's Contests

Worldwide Sideband Activity Contest 01:00 - 01:59 UTC 17 June  
NAQCC CW Sprint 00:30 - 02:30 UTC 18 June  
Phone Weekly Test 02:30 - 03:00 UTC 18 June  
A1Club AWT 11:45 - 13:00 UTC 18 June  
CWops Test 13:00 - 14:00 UTC and 19:00 - 20:00 UTC 18 June and 03:00 - 04:00 UTC and 07:00 - 08:00 UTC 19 June  
Mini-Test 40 17:00 - 17:59 UTC 18 June

Mini-Test 80 18:00 - 18:59 UTC 18 June  
Walk for the Bacon QRP Contest 00:00 - 01:00 UTC 19 June and 02:00 - 03:00 UTC 20 June  
NTC QSO Party 19:00 - 20:00 UTC 19 June  
QRP Fox Hunt 01:00 - 02:30 UTC 20 June  
NCCC FT4 Sprint 01:00 - 01:30 UTC 20 June  
Weekly RTTY Test 01:45 - 02:15 UTC 20 June  
NCCC Sprint 02:30 - 03:00 UTC 20 June  
K1USN Slow Speed Test 20:00 - 21:00 UTC 20 June  
All Asian DX Contest, CW 00:00 UTC 21 June to 24:00 UTC 22 June  
Pajajaran Bogor DX Contest 00:00 - 23:59 UTC 21 June  
SKCC QSO Party 12:00 UTC 21 June to 23:59 UTC 22 June  
Stew Perry Topband Challenge 15:00 UTC 21 June to 15:00 UTC 22 June  
West Virginia QSO Party 16:00 UTC 21 June to 04:00 UTC 22 June  
ARRL Kids Day 18:00 - 23:59 UTC 21 June  
Feld Hell Sprint 00:00 - 23:59 UTC 22 June  
K1USN Slow Speed Test 00:00 - 01:00 UTC 23 June  
ICWC Medium Speed Test 13:00 - 14:00 UTC and 19:00 - 20:00 UTC 23 June and 03:00 - 04:00 UTC 24 June  
OK1WC Memorial 16:30 - 17:29 UTC 23 June  
Worldwide Sideband Activity Contest 01:00 - 01:59 UTC 24 June

*Items used with acknowledgement to the ARRL Letter, the ARRL DX News, 425 DX Bulletin, DXNL  
Newsletter and DX-World*

# BOMBASTIK

## AMATEUR RADIO ACCESSORIES

Bombastik Crew Offer Great Customer Service and Quality Above All.

COUNTRY WIDE SHIPPING

### OUR SERVICE:

- ✓ **Antennas:** See our high quality hand crafted antennas and accessories.
- ✓ **Radios:** Premium-quality Chinese radios. No cheap knockoffs—only high-spec, unbeatable value!
- ✓ **Accessories:** A wide range of top-quality equipment that you'll be proud to own.



☎ 082 785 7763

🌐 <https://www.bombastik.co.za>